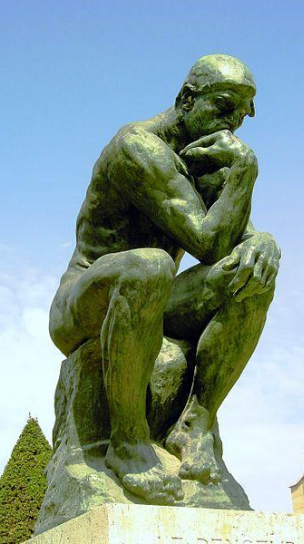


Sculpture



•Paper Mache, Wire, Found Object, Clay, Plaster, Wood, Sand etc!

•On island opportunities- Blown Glass, Wheel Throwing (Bamboushay or Trellis)

Sculpture

Sculpture is created in four basic ways:

- Carving
- Modeling
- Casting
- Construction

Sculpture

Carving:

Subtractive process: material is removed

Mainly wood and stone (marble)



Abstract Plaster Reduction Sculpture

- <http://www.princetonol.com/groups/iad/lessons/high/Maria-plaster.htm>

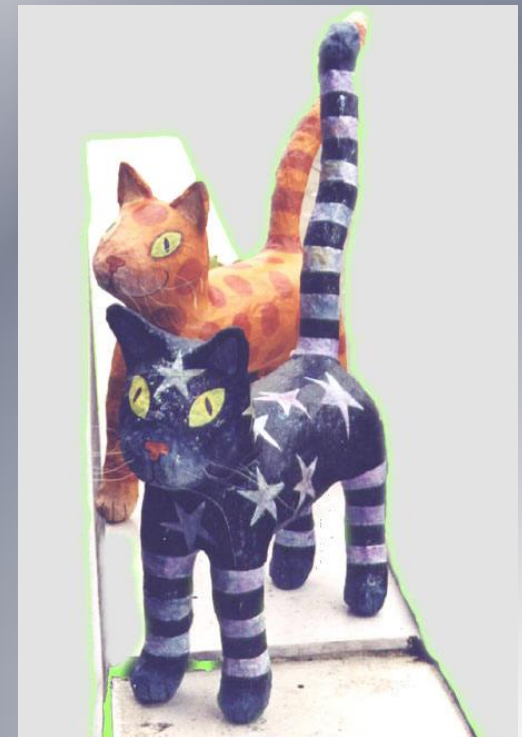


Sculpture

Modeling:

Additive process: material is added

Clay, wax, plaster, paper-mache



Sculpture

Casting: a mold is used to form molten bronze(or other material) into a desired shape.



<http://www.verylgoodnight.com/casting3.html>

Sculpture

Casting: “Lost wax” method or cire-perdue, often used for jewelry or small sculptures



<http://library.thinkquest.org/23492/data/bronze.htm?tqskip1=1&tqtime=0318>

A **plaster cast** is a copy made in plaster of another 3-dimensional form.

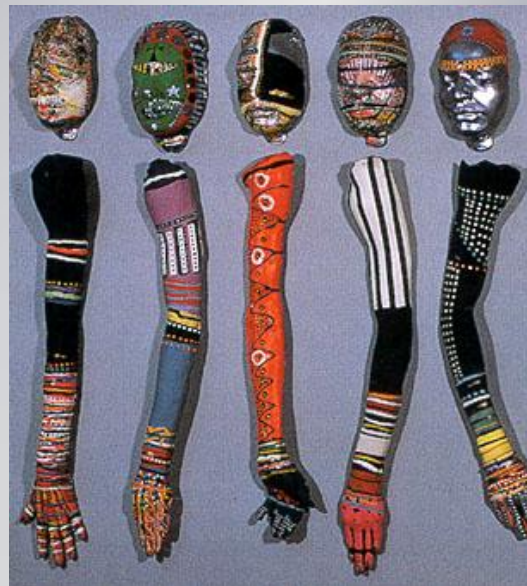
The original from which the cast is taken may be a sculpture, building, a face, a fossil, or other remains such as fresh or fossilized footprints – particularly in paleontology.

Plaster is applied to the original to create a mould or CAST (that is a negative impression) of the original.

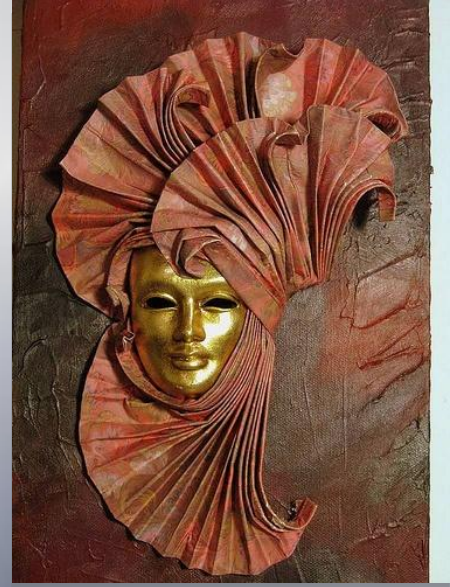
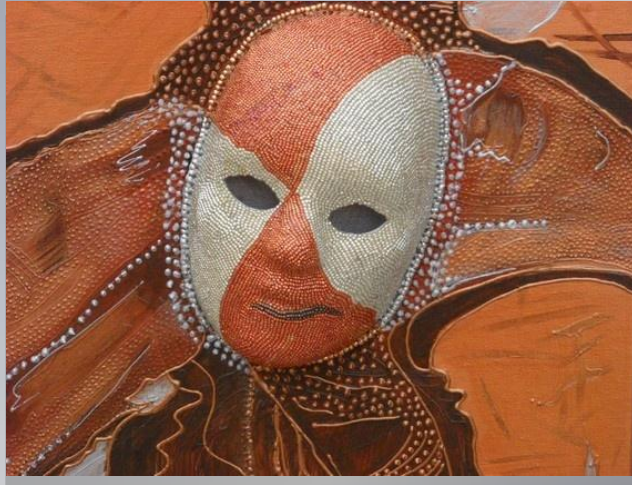
This mould is then removed and fresh plaster is poured into it, creating a copy in plaster of the original.



Plaster cast bust of George Washington by Jean-Antoine Houdon is based on a life mask cast in 1786.



Plaster Cast Relief Painting:



Sculpture

Construction: welding, gluing, nailing materials together.



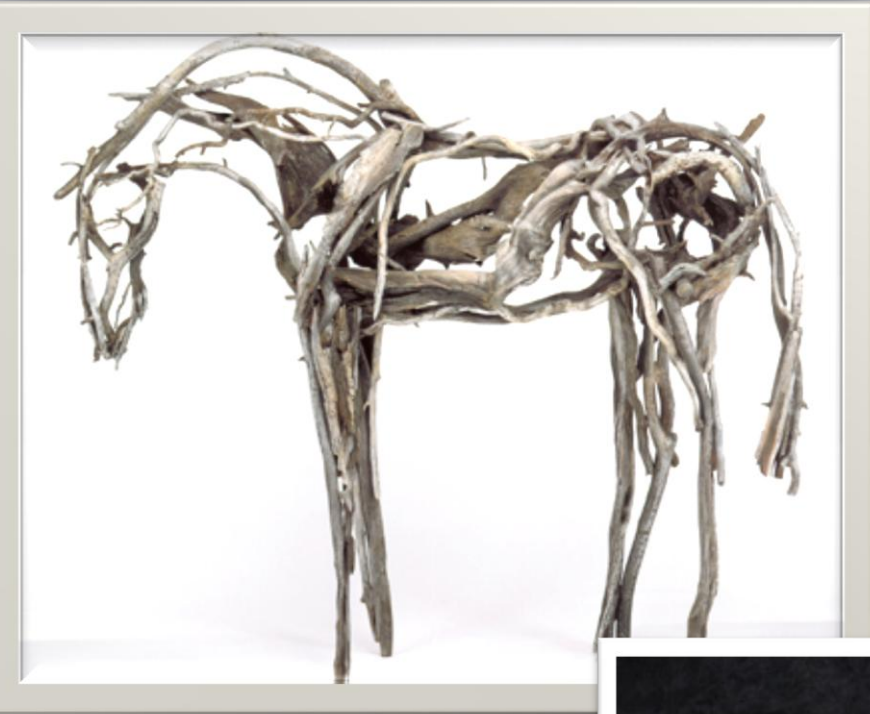
Sculpture

Assemblage: assembling found objects in unique ways.

Joseph Cornell



Use recycled materials



Sculpture

Kinetic Sculpture: movable parts (wind)

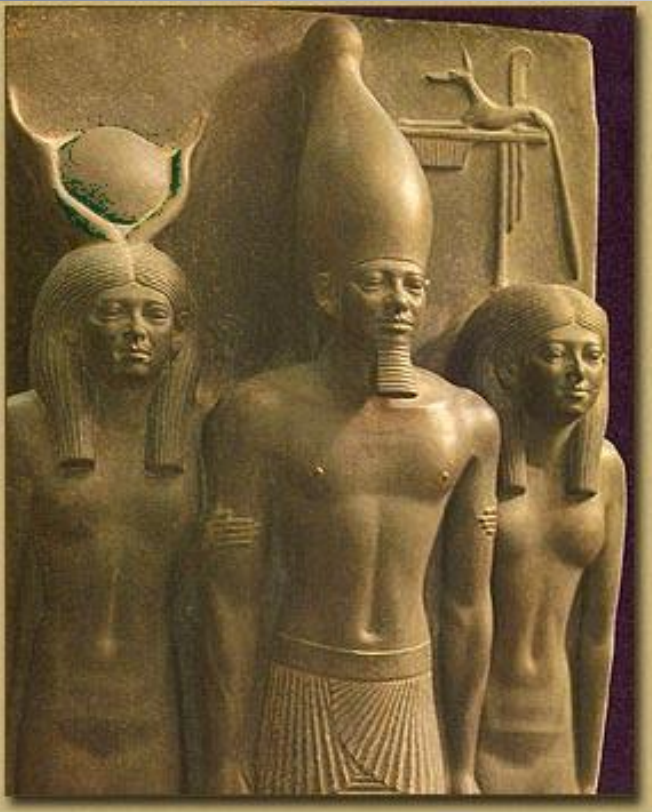


Alexander Calder: the mobile

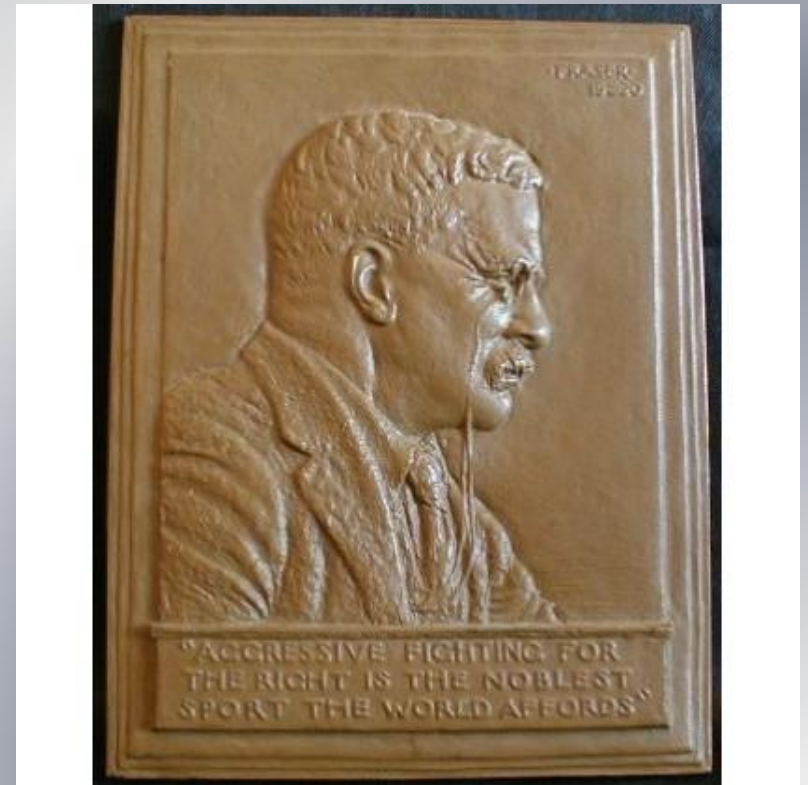
Sculpture

Relief: attached to a surface

High Relief



Bas Relief



Sculpture

Free-standing or sculpture in the round.



Sculpture

Tools: chisels



armature

